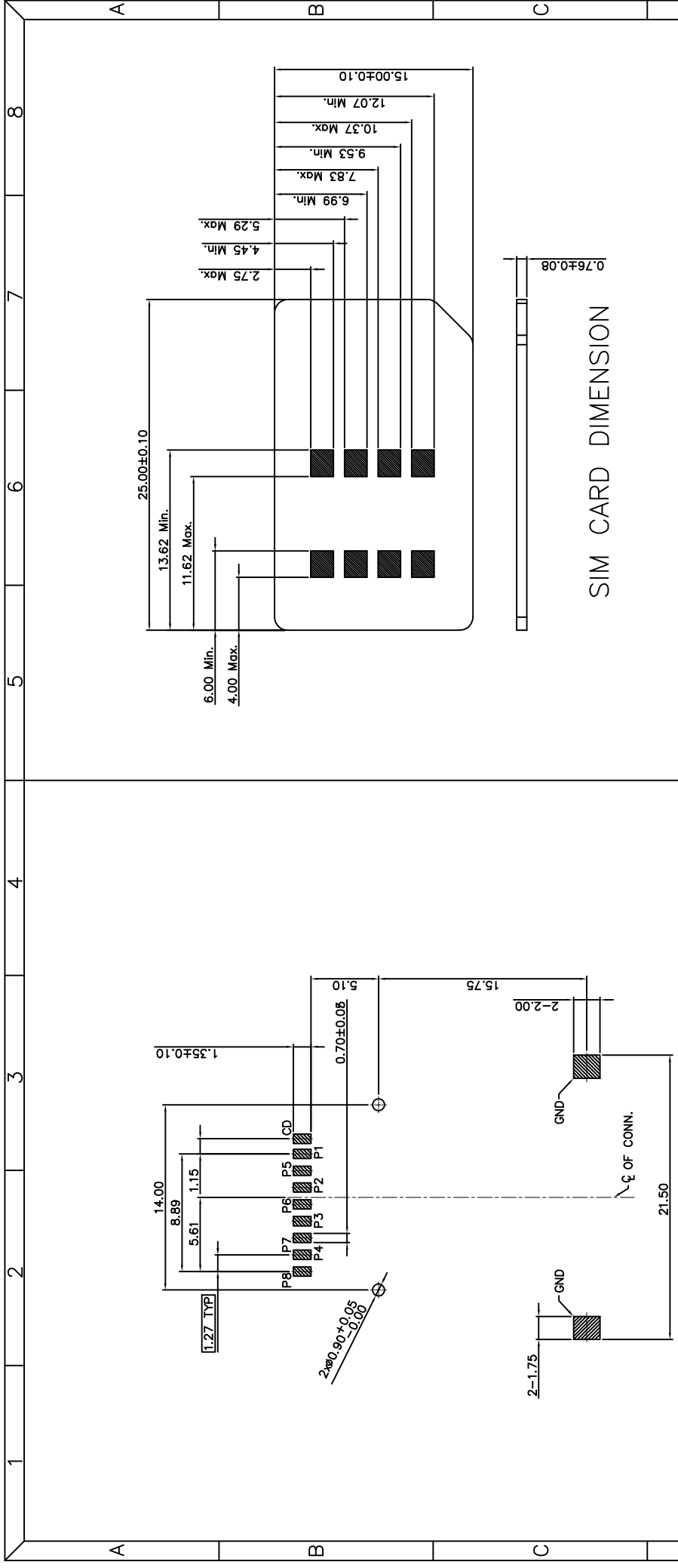


REV.	DATE	MODIFICATION	APPROVER
A	2010/07/19	NEW	Jason Lee

- Material:
 - Insulator: HIGH TEMP. PLASTIC, rated DL94V-0,color:black.
 - Terminal: Copper Alloy,Tin 100u" Min. at Solder Tail,Selected Gold on Contact Area Plating.
 - Terminal: Copper Alloy,Tin 100u" Min. at Solder Tail,Selected Gold on Contact Area Plating.
 - Shell: Stainless Steel.
 - Over Nickel Plated(50~80u"),Gold/Flash at Solder Tail.
- Mechanical and Electrical performance:
 - Mating Cycles: 5000 cycles(speed:400~600 cycles/h).
 - Rating current:0.5A Max.
 - Insulation resistance: 100MΩ Min. at 500 V DC.
 - Terminal contact resistance: 100mΩ Max.
 - Withstanding voltage:500V AC at 1mA Max. for 1 minute.
- Environment performance.
 - Operating temperature: -20℃~ +70℃
 - Storage temperature: -40℃~ +85

NAME: PUSH PUSH TYPE SIM CARD		UNITS mm	
PART NO: SI**-CP*03**		MATERIAL	
APPD: Jom Lee	CHKD: Vicky	FINISH	
DR: Amy		QTY	
TITLE: CUSTOMER DRAWING FOR PUSH PUSH TYPE SIM CARD 8P		SCALE 1:1	
DWG NO. DEANAPDWG120001		SHEET 1/3	
REV A		REV A	

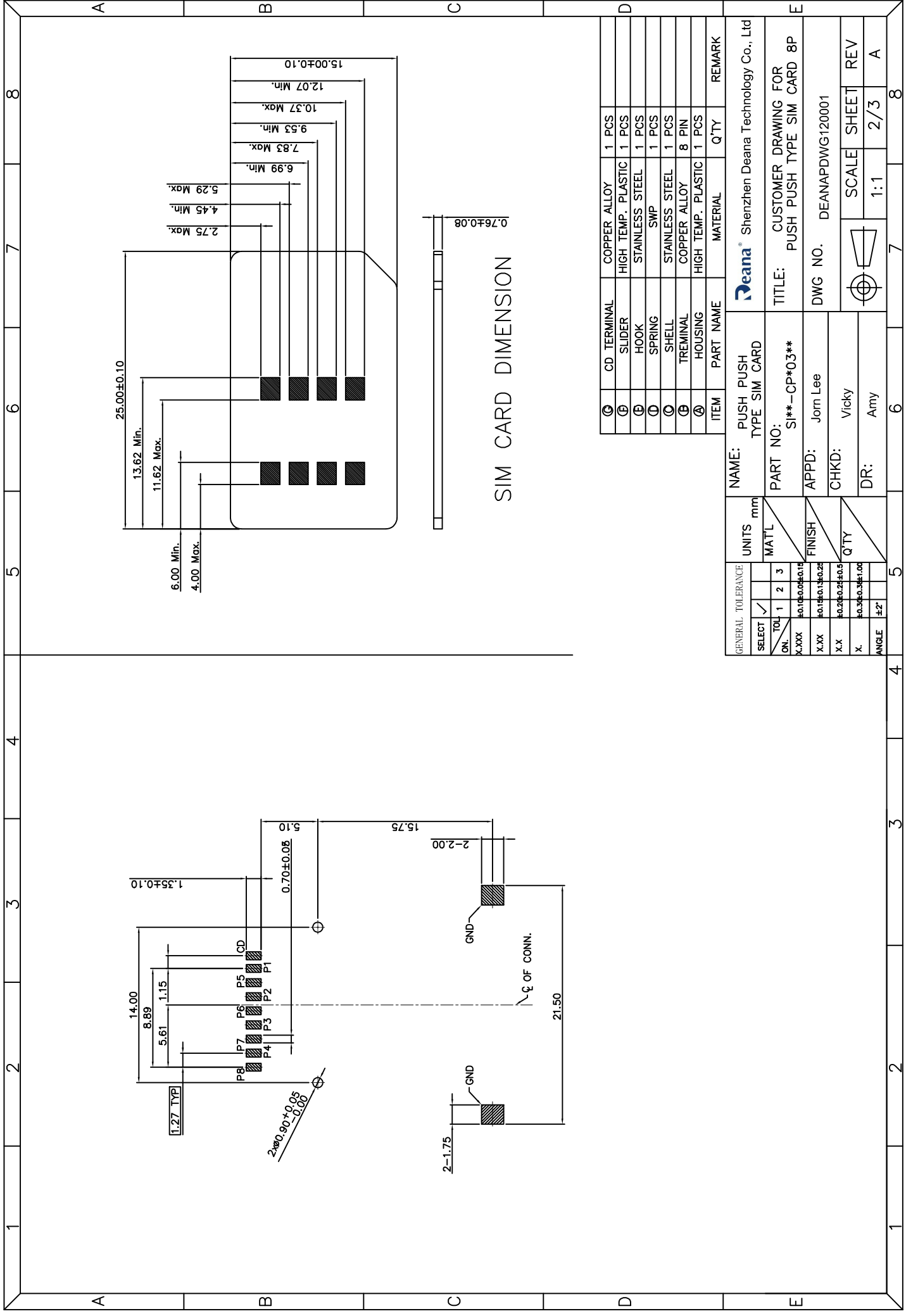
GENERAL TOLERANCE		UNITS mm	
SELECT	TOL	1	2
ON.		±0.10	±0.05
X.XXX		±0.05	±0.02
X.XX		±0.10	±0.05
X.X		±0.20	±0.10
X.		±0.30	±1.00
ANGLE		±2°	

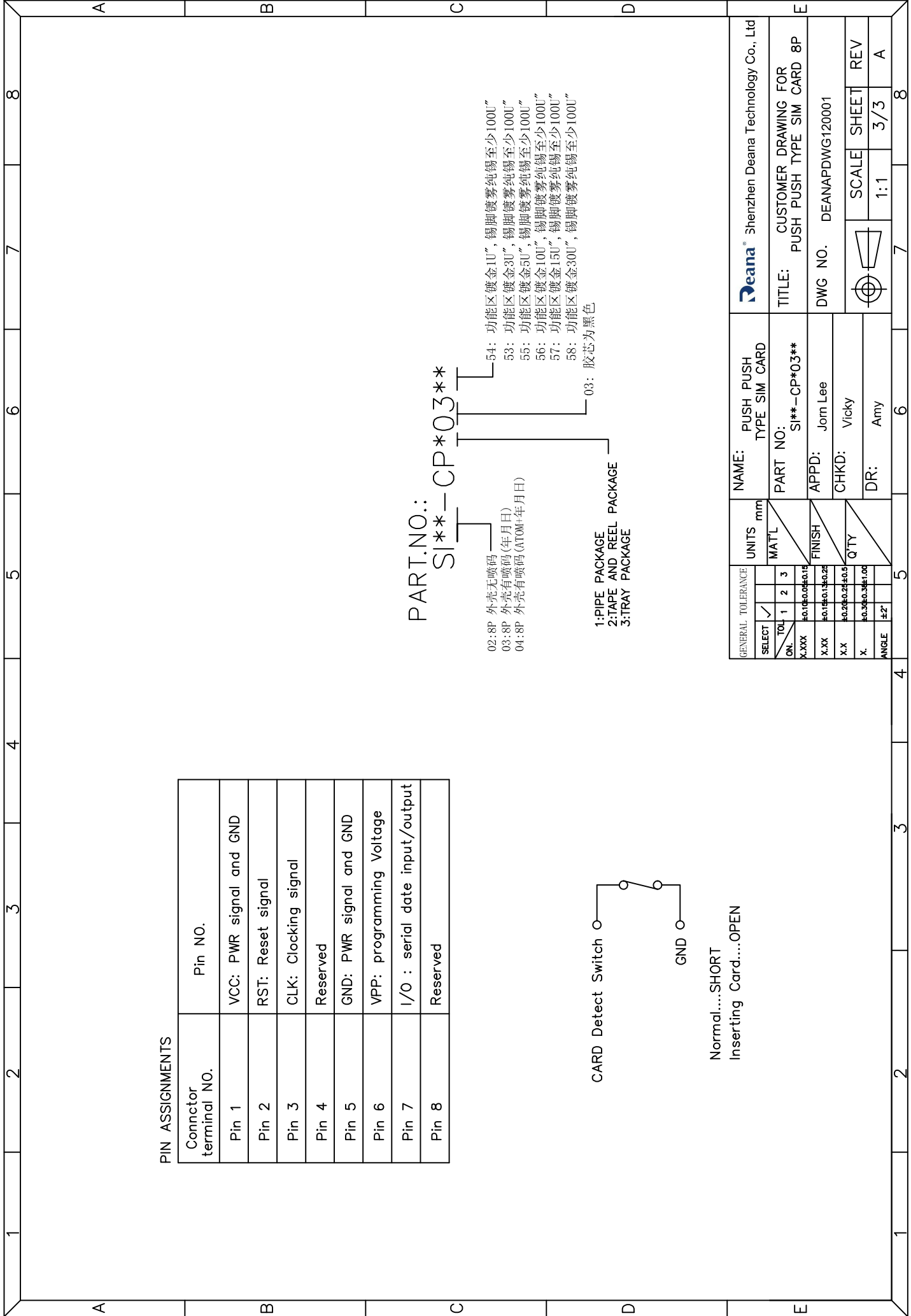


SIM CARD DIMENSION

CD	TERMINAL	MATERIAL	QTY	REMARK
①	SLIDER	HIGH TEMP. PLASTIC	1 PCS	
②	HOOK	STAINLESS STEEL	1 PCS	
③	SPRING	SWP	1 PCS	
④	SHELL	STAINLESS STEEL	1 PCS	
⑤	TREMNAL	COPPER ALLOY	8 PIN	
⑥	HOUSING	HIGH TEMP. PLASTIC	1 PCS	
ITEM	PART NAME	MATERIAL	QTY	REMARK

GENERAL TOLERANCE		UNITS mm		NAME: PUSH PUSH TYPE SIM CARD		Shenzhen Deana Technology Co., Ltd	
SELECT	TOL	1	2	MATL	PART NO: SI**-CP*03**	TITLE: CUSTOMER DRAWING FOR PUSH PUSH TYPE SIM CARD 8P	
ON.	X.XXX	±0.10	±0.05	FINISH	APPD: Jorm Lee	DWG NO. DEANAPDWG120001	
X.XXX	X.XX	±0.10	±0.25	QTY	CHKD: Vicky	SCALE SHEET REV	
X.X	X.X	±0.20	±0.5	ANGLE	DR: Amy	1:1 2/3 A	
X.	X.	±0.30	±1.00				





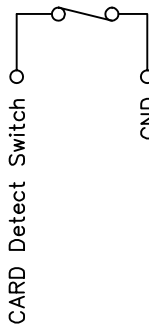
PIN ASSIGNMENTS

Connector terminal NO.	Pin NO.
Pin 1	VCC: PWR signal and GND
Pin 2	RST: Reset signal
Pin 3	CLK: Clocking signal
Pin 4	Reserved
Pin 5	GND: PWR signal and GND
Pin 6	VPP: programming Voltage
Pin 7	I/O : serial date input/output
Pin 8	Reserved

PART.NO.:

SI**=CP*03**

- 02: 8P 外壳无喷码
- 03: 8P 外壳有喷码 (年月日)
- 04: 8P 外壳有喷码 (ATOM+年月日)
- 54: 功能区镀金1U", 锡脚镀雾纯锡至少100U"
- 53: 功能区镀金3U", 锡脚镀雾纯锡至少100U"
- 55: 功能区镀金5U", 锡脚镀雾纯锡至少100U"
- 56: 功能区镀金10U", 锡脚镀雾纯锡至少100U"
- 57: 功能区镀金15U", 锡脚镀雾纯锡至少100U"
- 58: 功能区镀金30U", 锡脚镀雾纯锡至少100U"
- 03: 胶芯为黑色



Normal....SHORT
Inserting Card....OPEN

- 1: PIPE PACKAGE
- 2: TAPE AND REEL PACKAGE
- 3: TRAY PACKAGE

GENERAL TOLERANCE		UNITS mm			NAME: PUSH PUSH TYPE SIM CARD	Shenzhen Deana Technology Co., Ltd
SELECT	TOL	1	2	3		
ON.	X.XXX	±0.10	±0.05	±0.15	PART NO: SI**=CP*03**	TITLE: CUSTOMER DRAWING FOR PUSH TYPE SIM CARD 8P
	X.XX	±0.10	±0.10	±0.25	APPD: Jom Lee	DWG NO. DEANAPDWG120001
	X.X	±0.20	±0.25	±0.5	CHKD: Vicky	SCALE SHEET REV
	X.	±0.30	±0.30	±1.00	DR: Army	1:1 3/3 A
ANGLE	±2°					